



# cuesee

## Spotlight

Jan 2026

Eurotrol

[eurotrol.com](http://eurotrol.com)



# Quality Controls for In Vitro Diagnostics

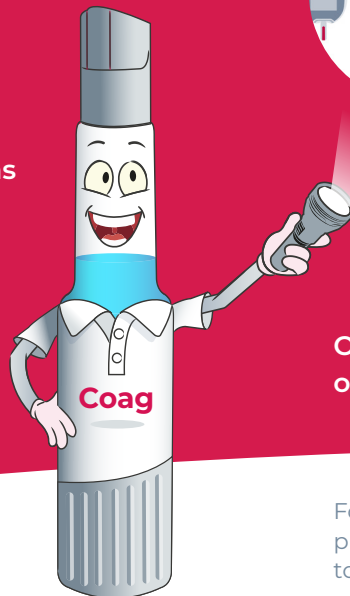
For 30+ years Eurotrol has been entrusted by customers worldwide to develop, manufacture and distribute CueSee® solutions for In Vitro Diagnostics (IVD).

Typical customers are

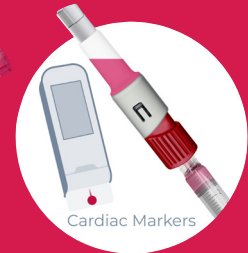
- Hospital laboratories
- Point-of-care sites
- Proficiency testing organizations
- Standardization bodies
- Diagnostic companies

Products have been registered in more than 100 countries.

We do offer CueSee® customized to meet your specific needs.



Blood Gases



Cardiac Markers



Diabetes Care



Coagulation



Hemoglobin

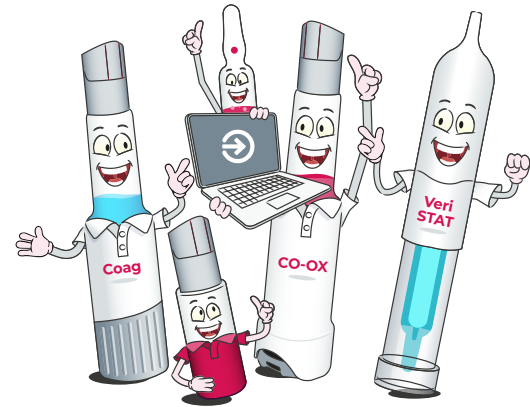
On the following pages you will find spotlights of some latest developments in CueSee®.





Your Companion  
to Validate  
CueSee Results

There is no more reliable reference for the expected results of CueSee than peer data comparison. Eurotrol offers a comprehensive and user-friendly solution to assist you with this reference for all your CueSee testing needs. There are endless possibilities for statistical and graphical presentations based on your own acceptance criteria. You will soon discover that it is the perfect companion for your CueSee.



Sign up for CueSee® Compare NOW!

[cueseecompare.com](http://cueseecompare.com)

For any assistance contact our team  
[supportus@eurotrol.com](mailto:supportus@eurotrol.com) | 502-501-1180 Ext. 1

## Benefits

- Easy access to target values
- Comparison of your results with peers
- Simple result entry manually or import
- Multiple reports with **your acceptance criteria**
- Real-time access to all reports
- Customizable to your testing program
- Satisfy regulatory requirements
- Continuous training and support
- **FREE** with all Eurotrol products



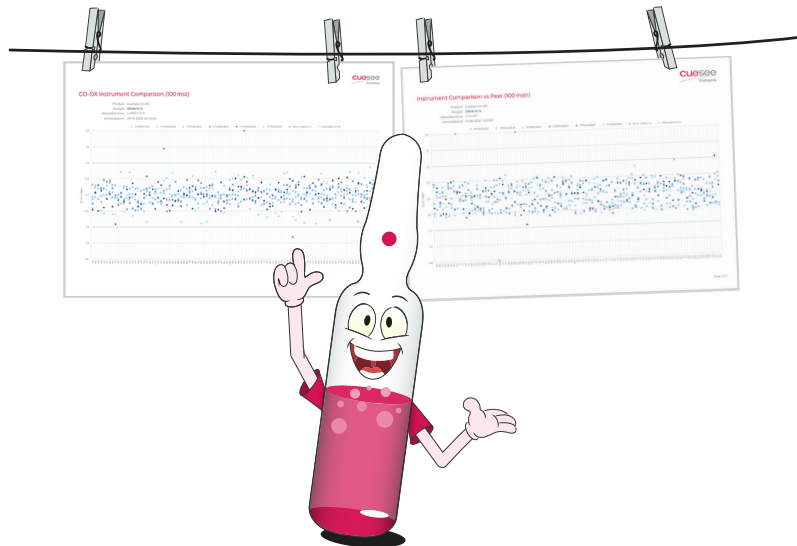
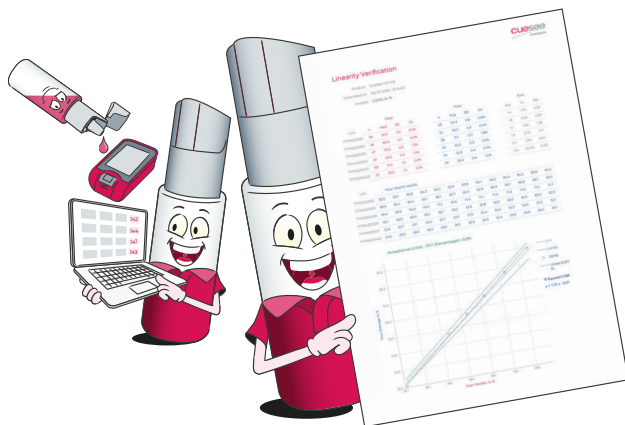


Unlock the true performance of your analyzers with CueSee Compare. The smart, modern way to visualize accuracy, detect trends, and elevate confidence in your results.

## Linearity Reports

A customizable linearity report tells you if your system behaves the way it should across the measuring range.

- Instantly visualize proportionality across levels
- Spot subtle deviations before they become problems
- Transform raw data into powerful insights for decision-making
- Shows if bias, recoveries and deviation from the expected relationship are within acceptable limits



## Instrument Comparison Reports

Whether you're standardizing systems across a hospital network, validating new instruments, or simply ensuring day-to-day accuracy CueSee Compare gives you the tools to instantly compare:

- Multiple analyzers
- Multiple reagent lots
- Multiple locations or networks
- Multiple QC levels and analytes

***It's the comparison tool every lab wishes they had — now they do.***

# cuesee

BGEM CSR



The future of BGEM  
CueSee. Safe and  
easy sampling with  
15 minute open vial  
stability.

A glass ampoule sealed inside the CueSee® Ringe (CSR) is opened with a simple turning motion eliminating the risk of cut fingers and glass scattering. After activation it functions similar to a standard syringe.

## Benefits

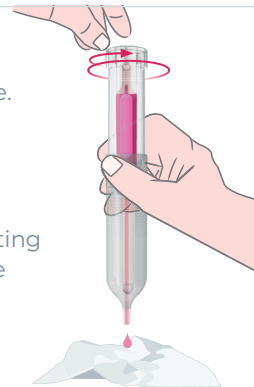
- Safe and easy sampling with the CueSee® Ringe (CSR)
- The best precision for gases
- Red dye to aid dosing
- Multiple tests with just ONE CueSee® Ringe
- Open vial stability of 15 minutes

Products are offered as a QC bundle (Level 1,2,3) and LV Bundle (Level 1,2,3,4,5). Ideal for routine CueSee, method comparisons, reportable range validation, linearity studies and competency in combination with FREE access to CueSee® Compare.



Glass ampoule inside the  
device for safe and easy use.

Activate the device by twisting  
until it stops. Then it can be  
used as a regular syringe.



Injection



Aspiration

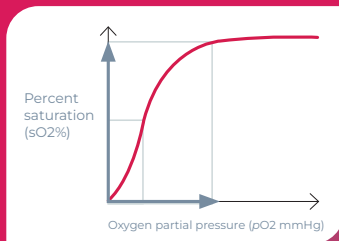




Ideal for Analytical Measurement Range (AMR)  
Validation in combination with FREE access to  
CueSee® Compare.

### Benefits

- Accuracy and precision of low pO<sub>2</sub> measurements
- Method comparisons and AMR validations
- Compatibility with all common blood gas instruments
- Comparable results to whole blood tonometry
- True oxygen-hemoglobin dissociation curve providing 10 minute open vial stability



For extreme high pO<sub>2</sub> we also offer CueSee® Hyperbaric.

31 lots of CueSee® Hypoxic, the results speak for themselves:

***"outstanding and consistent performance  
across all major instrument platforms."***

This exceptional reliability demonstrates the unmatched quality and robustness of CueSee® Hypoxic, giving laboratories the confidence they need when working in the most challenging measurement ranges.

#### Acceptance Criteria

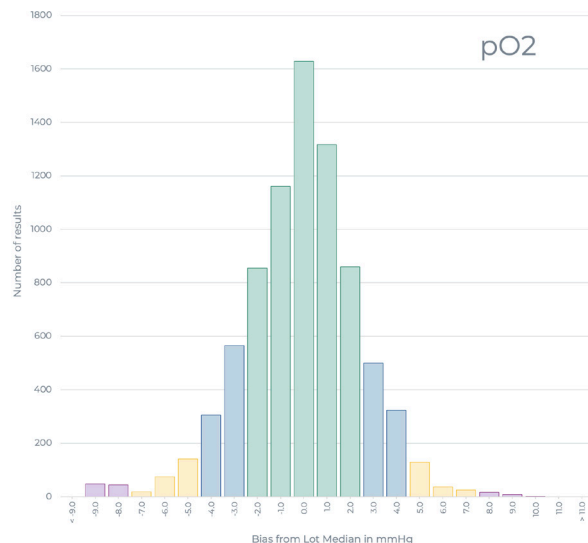
Criteria selected  $\pm 3 \times \text{SD} \rightarrow \pm 7.44 \text{ mmHg}$

Excellent ■  $|\leq 2.48| \text{ mmHg}$

Good ■  $|\leq 2.48| \text{ and } |\leq 4.96| \text{ mmHg}$

Acceptable ■  $|\leq 4.96| \text{ and } |\leq 7.44| \text{ mmHg}$

Unacceptable ■  $|\leq 7.44| \text{ mmHg}$



CueSee® Ringe (CSR) is an innovative packaging concept that will modernize CueSee® for blood gases on the Abbott i-STAT®. A glass ampoule sealed inside the device is opened with a simple turning motion eliminating the risk of cut fingers and glass scattering. After activation it functions similar to a standard syringe. The liquid inside the ampoule is not contaminated by ambient air, which reduces pre-analytical errors and provides a long open vial stability.

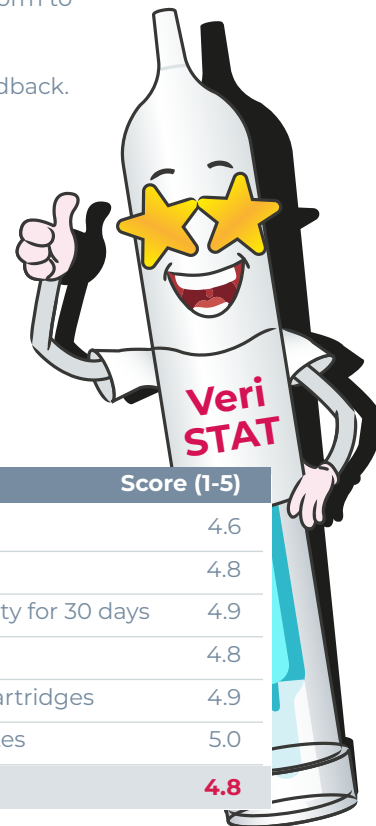
## Benefits

- Safe and easy sampling
- No shaking required before use
- Long shelf-life of 4 years at 2-8 °C
- 30 days storage at room temperature before use
- All analytes in one vial including Hematocrit (Hct)
- **Blue dye** to enhance sample visibility
- Products are offered as a QC and LV bundle
- The best precision for gases
- **Open vial stability of 15 minutes!**
- Multiple tests with just ONE CueSee® Ringe

Ideal for routine CueSee®, method comparisons, reportable range validation, linearity studies and competency testing in combination with **FREE** access to CueSee Compare.



Three levels of CueSee VeriSTAT® CSR were evaluated by point-of-care coordinators and laboratory scientists at 20 organizations across the USA. All iSTAT® blood gas cartridges along with Chem 8 and Creatinine were tested. Results were submitted in the CueSee® Compare platform to assess performance and a comprehensive survey was utilized for participant's feedback. The table below shows the positive scores given by participants.



Question	Score (1-5)
Overall Rating of CSR	4.6
User-Friendliness	4.8
Room Temperature Stability for 30 days	4.9
Activation of the CSR	4.8
Sampling into the iSTAT cartridges	4.9
In-Use stability of 15 minutes	5.0
<b>Overall Score</b>	<b>4.8</b>





Eurotrol has revolutionized CueSee® for coagulation by developing a unique plasma with red blood cells for reporting PT, INR, ACT and aPTT. Packaged in the innovative CueSee® Mix, a dual-chambered device, that keeps the lyophilized plasma with red blood cells separated from the reconstitution solution until activation. When ready to test a simple twisting motion allows the two components to mix. After mixing, the CueSee® material is easy and safe to test by use of the integrated dropper or by attaching a syringe.

### Benefits

- Safe and easy sampling
- Covering the clinical relevant ranges for PT, INR, ACT and aPTT in **ONE** vial
- Plasma with red blood cells that mimic patient samples
- Products are offered as a QC and VM bundle
- Compatible with all common POCT devices

Ideal for routine CueSee®, method comparisons, reportable range validation, linearity studies and competency testing in combination with **FREE** access to CueSee® Compare.



Cheers to the POC team at Huntsville Hospital! They were the first to experience testing with our new CueSee® Coag controls which became available in May 2025.



*"It was nice and easy to use, especially compared to having to mix up custom heparin dilutions." "Were able to go across all 21 of our analyzers ... I would project that we could go across 24 or 25 analyzers with one vial."*  
*"It can be difficult to see if you've loaded the cartridge properly, so it was nice to have a color of the sample similar to blood."*





The only CueSee® for CO-oximeters covering the whole reportable range with real hemoglobin derivatives like patient samples. Packaged in the ACU-Drop II, a two chambered device, which separates the FO<sub>2</sub>Hb and FCOHb from FMetHb during storage, provides a stable formulation.

This separation of fractions also means multiple concentrations of all analytes including FMetHb are available. Once ready to use, simply push a button to mix the fractions and use the built-in dropper bottle or attach a syringe to test.

### Benefits

- Containing measurable ranges for tHb, FO<sub>2</sub>Hb, FCOHb and **FMetHb (Methemoglobin)**
- Safe and easy sampling
- Open vial stability of 15 minutes
- Proven superior performance on CO-oximeters
- Products are offered as QC and VM bundle
- Rated no. 1 by Proficiency Testing (PT) organizations

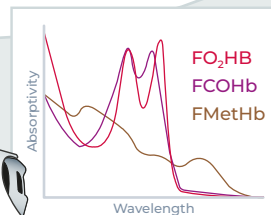
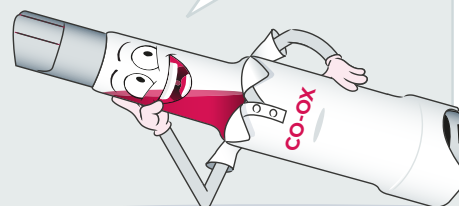
Ideal for routine CueSee, method comparisons, reportable range validation, linearity studies and competency testing in combination with **FREE** access to CueSee Compare.



**FMetHb**



The only product offering FMetHb concentrations covering a wide reportable range with the lowest spread possible.





## Innovation Behind Every Drop

I'm thrilled to share an exciting milestone that marks the next chapter of innovation for our company.

We have officially brought our custom-built robotic production line into full operation, enabling complete automation of the assembly and filling process for ACU-Drop II and CueSee® Mix. This isn't just a technological upgrade. It's a transformative step forward, delivering unmatched precision, consistency, and reliability in every single unit we produce.

This achievement reflects countless hours of creativity, engineering excellence, and dedication from our incredible team. Their vision and hard work have turned a bold idea into a production reality.

We're not just creating products, we're redefining what's possible and shaping the future of CueSee®.

Bart Maas - President





# Meet us

## COLA

**6-8 May 2026 Nashville, TN (USA)**

The educational sessions at the Laboratory Enrichment Forum provide practical tools to use in your laboratory as you support other medical professionals and the communities you serve together.

---

## ASCLS-JAM

**29 Jun - 2 Jul 2026 St. Louis, MO (USA)**

The American Society for Clinical Laboratory Science (ASCLS), Association of Genetic Technologists (AGT), and Society of American Federal Medical Laboratory Scientists (SAFMLS) holds a single Joint Annual Meeting (JAM).

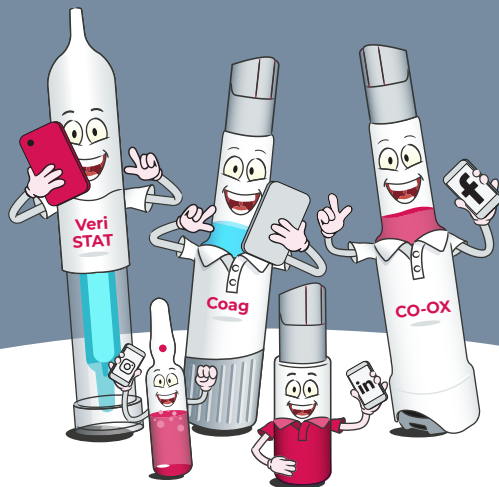
---

## ADLM

**26-30 Jul 2026 Anaheim, CA (USA)**

The ADLM Annual Scientific Meeting & Clinical Lab Expo will showcase the cutting-edge science and technology shaping the future of laboratory medicine.

# Follow us



in



f



x

**cue**see

# Find us

## Headquarters

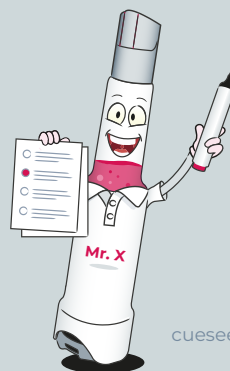
Eurotrol B.V.  
Keplerlaan 20  
6716 BS Ede  
The Netherlands  
office@eurotrol.com  
T +31 318 695777

## The Americas

Eurotrol, Inc.  
850 N Black Branch Rd  
Elizabethtown, KY 42701  
United States  
supportus@eurotrol.com  
+1 502 501 1180



[eurotrol.com](http://eurotrol.com)



# Online Survey



[cuesee.eurotrol.com/en/surveys/customers](http://cuesee.eurotrol.com/en/surveys/customers)

# cuesee

Spotlight



CueSee  
TO THE  
ResCue

Eurotrol

[eurotrol.com](http://eurotrol.com)