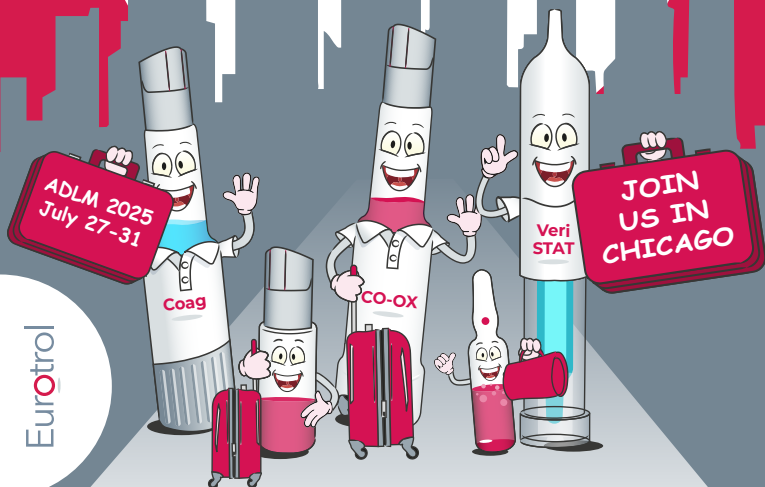


cuesee

Spotlight

July 2025



Eurotrol

eurotrol.com



Quality Controls for In Vitro Diagnostics

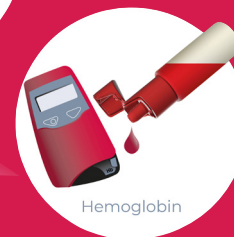
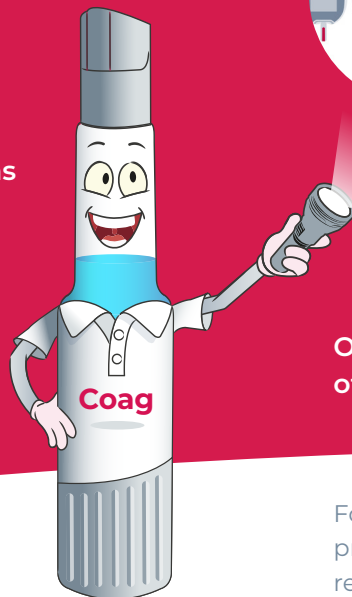
For 30+ years Eurotrol has been entrusted by customers worldwide to develop, manufacture and distribute CueSee® solutions for In Vitro Diagnostics (IVD).

Typical customers are

- Hospital laboratories
- Point-of-care sites
- Proficiency testing organizations
- Standardization bodies
- Diagnostic companies

Products have been registered in more than 100 countries.

We do offer CueSee® customized to meet your specific needs.



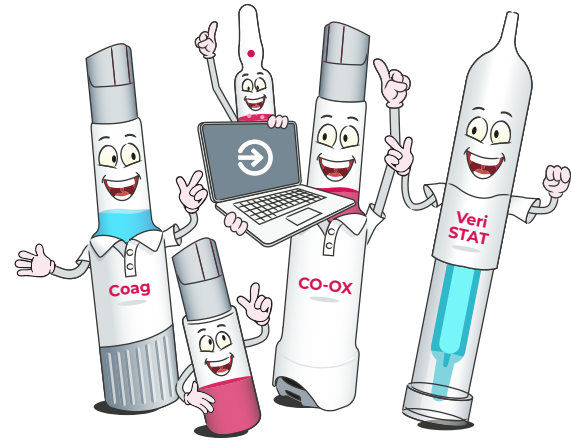
On the following pages you will find spotlights of some latest developments in CueSee®.





Your Companion
to Validate
CueSee® Results

There is no more reliable reference for the expected results of CueSee® than peer data comparison. Eurotrol offers a comprehensive and user friendly solution to assist you with this reference for all your CueSee® testing needs. There are endless possibilities for statistical and graphical presentations based on your own acceptance criteria. You will soon discover that it is the perfect companion for your CueSee®.



Sign up for CueSee® Compare NOW!

cueseecompare.com

For any assistance contact our team
supportus@eurotrol.com | 502-501-1180 Ext. 1

Benefits

- Comparison of your results with peers
- Simple result entry manually or import
- Multiple reports with **your acceptance criteria**
- Instant access to all historical reports
- Customizable to your testing program
- Satisfy regulatory requirements
- Continuous training and support
- **FREE** with all Eurotrol products





We made the
impossible possible

cuesee
Coag

Eurotrol has revolutionized CueSee® for coagulation by developing a unique plasma with red blood cells for reporting PT, INR, ACT and aPTT. Packaged in the innovative CueSee® Mix, a dual-chambered device, that keeps the lyophilized plasma with red blood cells separated from the reconstitution solution until activation. When ready to test a simple twisting motion allows the two components to mix. After mixing, the CueSee® material is easy and safe to test by use of the integrated dropper or by attaching a syringe.

Benefits

- Safe and easy sampling
- Covering the clinical relevant ranges for PT, INR, ACT and aPTT in **ONE** vial
- Plasma with red blood cells that mimic patient samples
- Products are offered as a QC and VM bundle
- Compatible with all common POCT devices

Ideal for routine CueSee®, method comparisons, reportable range validation, linearity studies and competency testing in combination with **FREE** access to CueSee® Compare.



cuesee

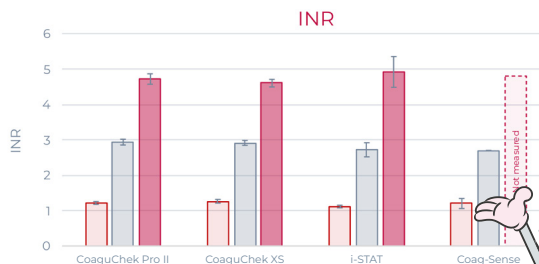
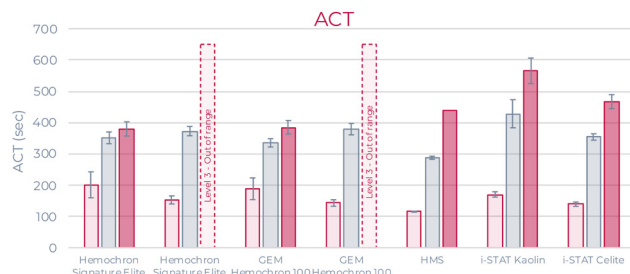
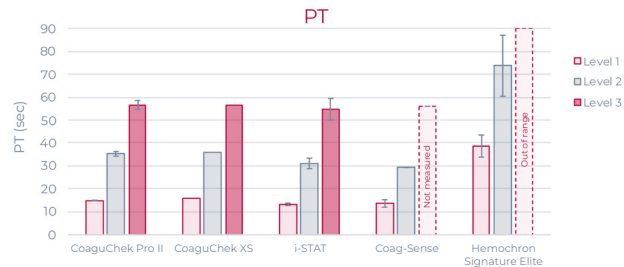
Coag

Cheers to the POC team at Huntsville Hospital! They were the first to experience testing with our new CueSee® Coag controls which became available in May 2025.

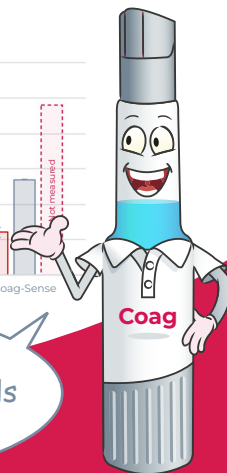


"It was nice and easy to use, especially compared to having to mix up custom heparin dilutions." "Were able to go across all 21 of our analyzers ... I would project that we could go across 24 or 25 analyzers with one vial." "It can be difficult to see if you've loaded the cartridge properly, so it was nice to have a color of the sample similar to blood."

”



Impressive performance of 3 different concentration levels tested on different Devices.





New experience with
CueSee® blood gases
on the Abbott i-STAT®

cuesee
VeriSTAT CSR

CueSee® Ringe is an innovative packaging concept that will modernize CueSee® for blood gases on the Abbott i-STAT®. A glass ampoule sealed inside the device is opened with a simple turning motion eliminating the risk of cut fingers and glass scattering. After activation it functions similar to a standard syringe. The liquid inside the ampoule is not contaminated by ambient air, which reduces pre-analytical errors and provides a long open vial stability.

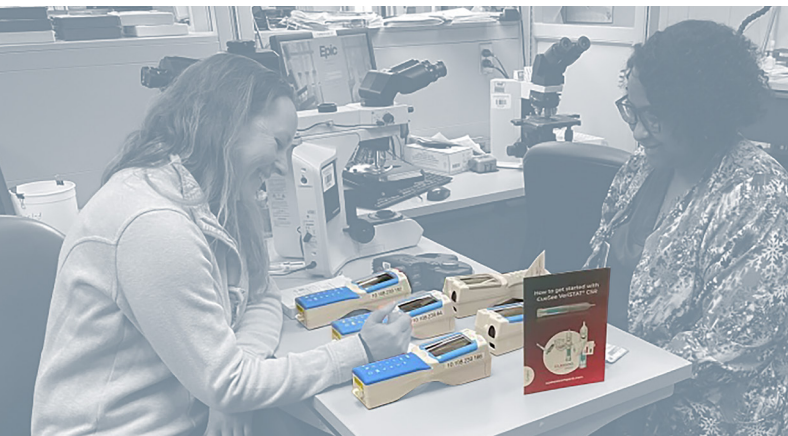
Benefits

- Safe and easy sampling
- No shaking required before use
- Long shelf-life of 4 years at 2-8 °C
- 30 days storage at room temperature before use
- All analytes in one vial including Hematocrit (Hct)
- **Blue dye** to enhance sample visibility
- Products are offered as a QC and LV bundle
- The best precision for gases
- **Open vial stability of 15 minutes!**
- Multiple tests with just ONE CueSee® Ringe

Ideal for routine CueSee®, method comparisons, reportable range validation, linearity studies and competency testing in combination with **FREE** access to CueSee Compare.



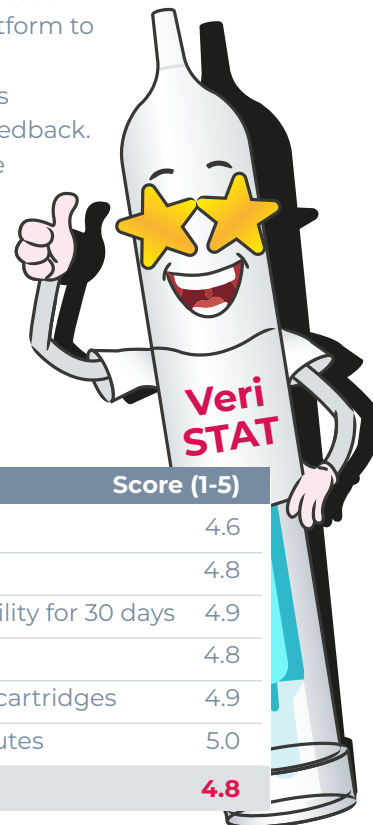
In December 2024 CueSee® VeriSTAT CSR became available in the USA. We celebrate with Keri (POCC at Piedmont Fayette, GA) the first user in the World of this innovative CueSee®.




I really did like it so much better than the traditional vials of LVM. You didn't feel so rushed to get the cartridges loaded and worried about the pO2 because of the 15 minutes stability of the product.



Three levels of CueSee VeriSTAT® CSR were evaluated by point-of-care coordinators and laboratory scientists at 20 organizations across the USA. All iSTAT® blood gas cartridges along with Chem 8 and Creatinine were tested. Results were submitted in the CueSee® Compare platform to assess performance and a comprehensive survey was utilized for participant's feedback. The table below shows the positive scores given by participants.



Question	Score (1-5)
Overall Rating of CSR	4.6
User-Friendliness	4.8
Room Temperature Stability for 30 days	4.9
Activation of the CSR	4.8
Sampling into the iSTAT cartridges	4.9
In-Use stability of 15 minutes	5.0
Overall Score	4.8



Try it and CueSee®
will never be
the same again

cuesee
CO-OX

The only CueSee® for CO-oximeters covering the whole reportable range with real hemoglobin derivatives like patient samples. Packaged in the ACU-Drop II, a two chambered device, which separates the FO₂Hb and FCOHb from FMetHb during storage, provides a stable formulation.

This separation of fractions also means multiple concentrations of all analytes including FMetHb are available. Once ready to use, simply push a button to mix the fractions and use the built-in dropper bottle or attach a syringe to test.

Benefits

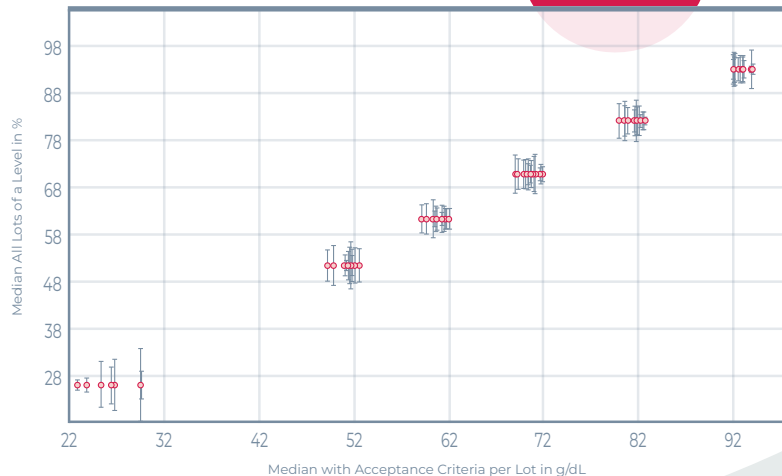
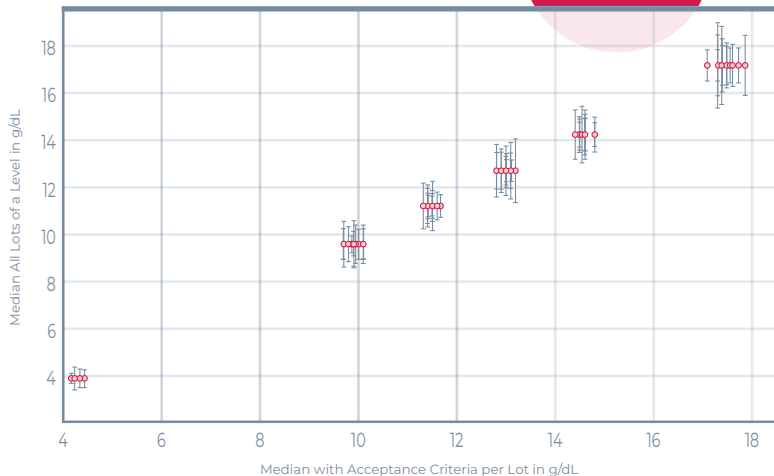
- Containing measurable ranges for tHb, FO₂Hb, FCOHb and **FMetHb (Methemoglobin)** for the whole reportable range
- Safe and easy sampling
- Open vial stability of 15 minutes
- Proven superior performance on CO-oximeters
- Products are offered as QC and VM bundle
- Rated no. 1 by Proficiency Testing (PT) organizations

Ideal for routine CueSee®, method comparisons, reportable range validation, linearity studies and competency testing in combination with **FREE** access to CueSee Compare.



tHb

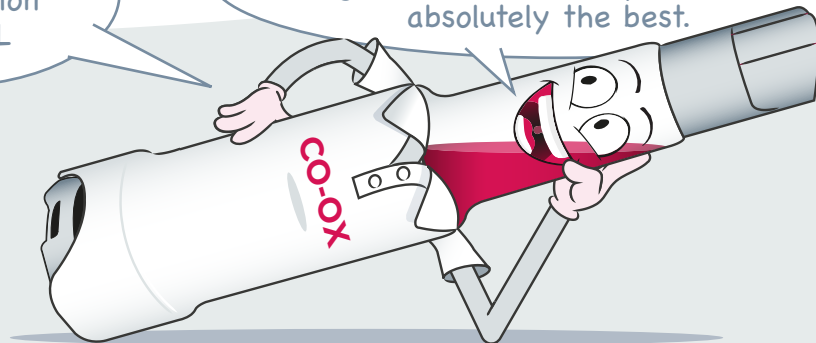
FO2Hb



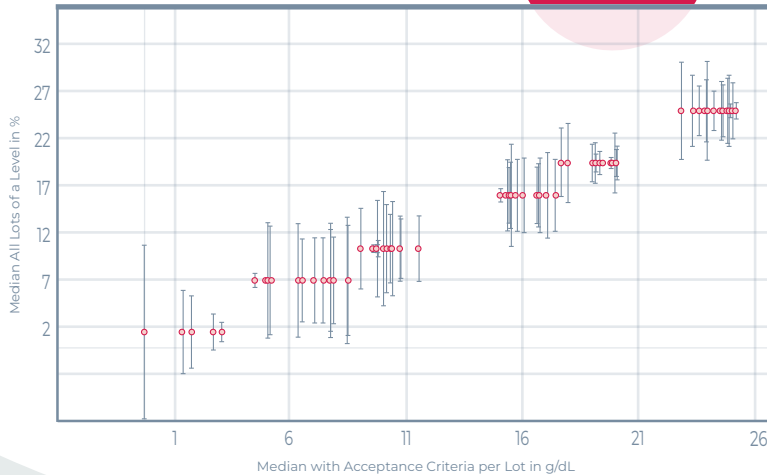
Very impressive performance of 75 lots spread over 6 different concentration levels tested on different CO-oximeters.

Even such a low concentration of 4 g/dL

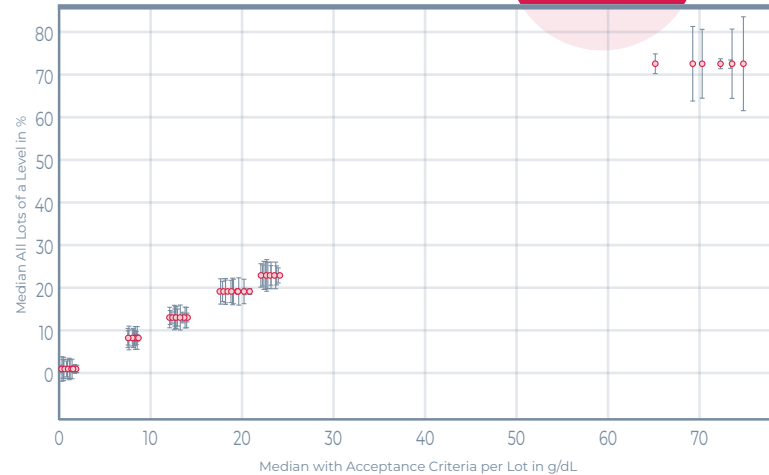
Covering the widest reportable range with the best reproducibility, absolutely the best.



FCOHb

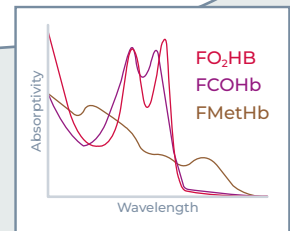
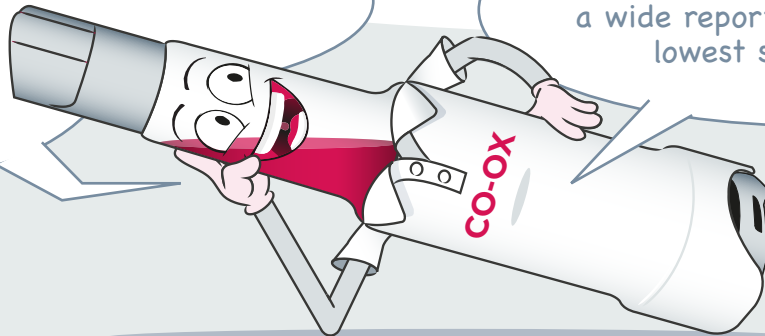


FMetHb



Covering the reportable range from 0-25% for FCOHb on all instruments knowing how hard it is to separate the spectra of FCOHb from FO₂Hb

The only product offering FMetHb concentrations covering a wide reportable range with the lowest spread possible.





Meet us

ADLM

27-31 Jul 2025 Chicago, IL USA

The ADLM Annual Scientific Meeting & Clinical Lab Expo will showcase the cutting-edge science and technology shaping the future of laboratory medicine. Join us at the McCormick Place Convention Center in Chicago and visit our Booth 518 to learn about our exciting new products.

MEDICA

17-20 Nov 2025

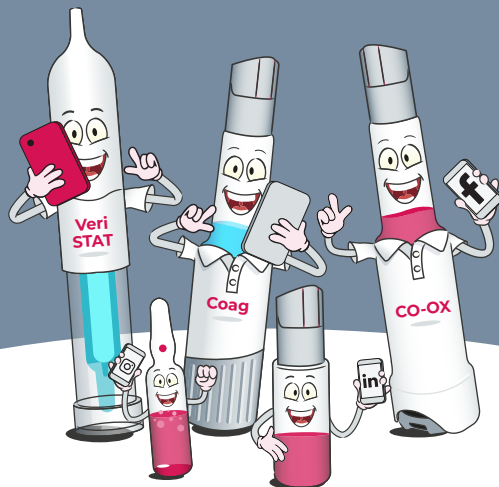
With over 5,000 exhibitors from 72 countries and 80,000 visitors MEDICA in Düsseldorf is one of the largest medical trade fairs in the world. It offers a central stage for innovative products and services from the fields of medical imaging, laboratory technology, diagnostics, health IT, mobile health as well as physiotherapy/orthopaedic technology and medical consumables.

AARC

6-9 Dec 2025

The AARC International Congress is the premier networking and educational event for respiratory therapists from across the country and around the world. Congress offers cutting-edge lectures by the top leaders in the industry, a robust exhibit hall showcase the latest in industry products and services, and, of course, ample networking. Please come and visit us at our booth 921.

Follow us



in



f



x

cuesee

Find us

Headquarters

Eurotrol B.V.
Keplerlaan 20
6716 BS Ede
The Netherlands
office@eurotrol.com
T +31 318 695777

The Americas

Eurotrol, Inc.
850 N Black Branch Rd
Elizabethtown, KY 42701
United States
officeus@eurotrol.com
+1 502 501 1180



eurotrol.com



Online Survey



cuesee.eurotrol.com/en/surveys/customers

cuesee

Spotlight



Eurotrol

eurotrol.com